



INNOVISION CONCEPTS

Best Education & Career

NEWTON
Education Services

Studying in Germany – An Overview

Andrea Agbo

CEO and Head of Best Education & Career
Cairo – February 2020



Agenda

- Why study in Germany?
- Institutions of Higher Education in Germany
- Entry requirements to Higher Education
- Costs and possible funding
- General application process
- Introducing two examples



INNOVISION CONCEPTS

Best Education & Career



Why Study in Germany?

- Top-ranked universities
- Globally-recognized degree courses
- Travel across Europe on a student visa
- Affordable costs of living
- Diverse community
- Strong economy and a lot of well known companies and brands



INNOVISION CONCEPTS

Best Education & Career



Institutions of Higher Education

- University – focus on Science and Research
- University of Applied Science (Hochschule für angewandte Wissenschaft) – bridging the gap between theory and practice
- Private University



INNOVISION CONCEPTS

Best Education & Career

NEWTON
Education Services

Entry Requirements to Higher Education

- Higher Education admissions qualifications

Primary sources of information:

Database of the DAAD – www.daad.com

Database of the Standing Conference of
Ministers of Education and Cultural Affairs –
Anabin – <http://anabin.kmk.org>



INNOVISION CONCEPTS

Best Education & Career

NEWTON
Education Services

Entry Requirements to Higher Education

The databases will inform you whether your certificate is:

- Recognised as a qualification for direct university admission
- Only recognised as a qualification for subject-restricted study for a certain range of subjects
- Only recognised in combination with the proof you have successfully completed one or two academic years of study in your home country or
- Not recognised as a higher education entrance qualification



INNOVISION CONCEPTS

Best Education & Career



Entry Requirements to Higher Education

General Certificate of Education Advanced Subsidiary & Advanced Level

- At least three A-Levels and one AS Level with one language (literature is NOT accepted) and math or natural sciences (physics, chemistry, biology).
- For engineering and mathematical study courses:
 - GCE A-Level in mathematics
 - One of the following GCE A-Level subjects: Physics, Chemistry, Biology, Computer Science
- For natural science study courses:
 - Two of the following GCE A-Level subjects: Mathematics, Biology, Chemistry, Physics



INNOVISION CONCEPTS

Best Education & Career



Entry Requirements to Higher Education

General Certificate of Education Advanced Subsidiary & Advanced Level

- For humanities, law, social sciences, economics and art study courses:
 - A GCE A-Level subject that corresponds to the chosen course of study.
 - Additionally, GCE A-Level in Mathematics for economics and social sciences
- For medicine study courses:
- Three GCE-Level subjects in: Mathematics, Biology, Chemistry, Physics



INNOVISION CONCEPTS

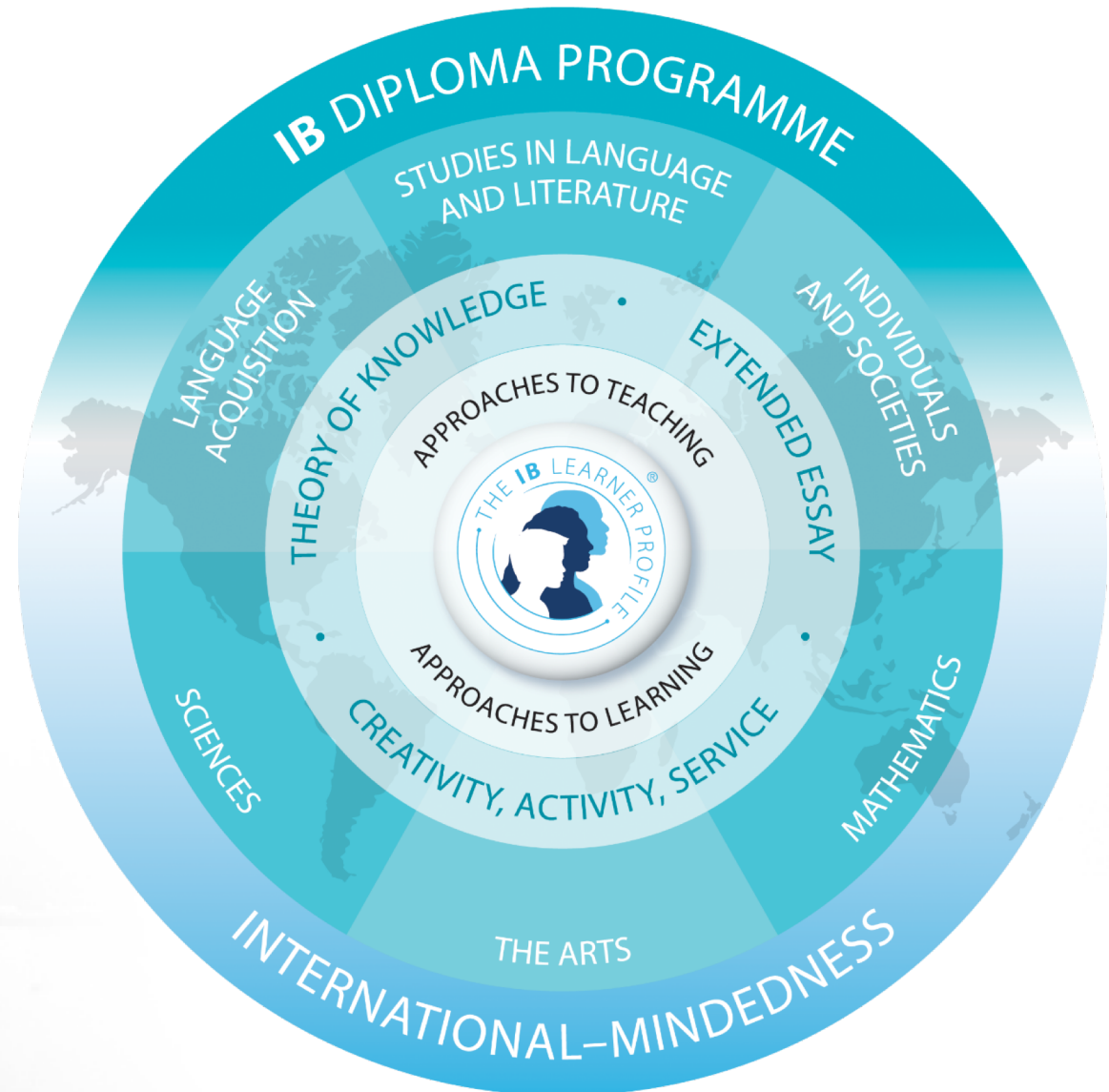
Best Education & Career



Entry Requirements to Higher Education

International Baccalaureate Diploma

- Two languages at level A or B, of which at least one is a foreign language as “Language A” or “Language B HL”
- A natural science subject (Physics, Chemistry, Biology)
- Mathematics (Mathematical Methods or Mathematics HL or Further Mathematics in conjunction with Mathematics HL)



INNOVISION CONCEPTS

Best Education & Career

NEWTON
Education Services

Entry Requirements to Higher Education

International Baccalaureate Diploma

- A social science subject (History, Geography, Economics, Psychology, Philosophy, Social Anthropology and Business and Management).
- One subject in addition to the subject mentioned above, can be taken from one of the following subjects:
 - Art/Design, Music, Theatre Arts; Film, Literature and Performance, another modern foreign language, Latin, Classical Greek, General Chemistry, Applied Chemistry, Environmental Systems, Computer Science, Design Technology, World Religions, Sports Exercise and Health Science.



INNOVISION CONCEPTS

Best Education & Career



Entry Requirements to Higher Education

International Baccalaureate Diploma

- Among the three Higher Level subjects must be either Mathematics or a natural science subject (Physics, Chemistry, Biology).
- All subjects must be done in two consecutive years in the IB Diploma Programme.
- Minimum IB score of 4. If only one subject has an IB score of 3, it can be substituted by another subject of the same level of proficiency with a minimum IB score of 5 with a total of, at least, 24 points.



INNOVISION CONCEPTS

Best Education & Career



Entry Requirements to Higher Education

American High School Diploma earned in Egypt

- Proof from the following subject groups: Mother tongue, foreign language, natural science, mathematics and social science, each passed with the minimum grade
- Admission to Studienkolleg – subject-restricted

Proof of successful completion of one academic year at a university, corresponding to the planned, main study course at a German university



INNOVISION CONCEPTS

Best Education & Career



Entry Requirements to Higher Education

High School Diploma earned in Egypt

- Direct entry – subject-restricted

Proof of successful completion of two academic years for the previous discipline and related subjects at a University, corresponding to the planned, main study course at a German University



INNOVISION CONCEPTS

Best Education & Career

NEWTON
Education Services

Entry Requirements to Higher Education

Egyptian General Secondary Education Certificate (Thanaweya Amma)

- Admission to Studienkolleg with **60%** of the maximum points/grade and specific subjects in accordance to your chosen branch for example Maths-Technical or Natural Sciences
 - **Branch: Natural Science**
Direct entry to all courses – no subject restrictions
 - **Branch: Maths-Technical**
Course-restricted entry to Studienkolleg
 - **For both branches:** direct subject-restricted entry to a German university after the successful completion of one year of study



INNOVISION CONCEPTS

Best Education & Career



Entry Requirements to Higher Education

Studienkolleg – foundation course for university entrance

- Regardless of whether the study program is in **German** or **English**
- Courses are **separated** according to subjects and future educational choices
- Proof of **German skills** (B1 to B2) and Maths for science and technical study choices – entrance test
- **Two semesters** (one year) with a qualification assessment examination at the end, so called Feststellungsprüfung
- **Public** and **private** Studienkolleg



INNOVISION CONCEPTS

Best Education & Career



Entry Requirements to Higher Education

Studienkolleg – foundation course for university entrance

- Typical courses at Studienkolleg always with German lessons
 - T- course: Maths, Physics, Chemistry and Computer Science
 - M-course: Maths, Physics, Chemistry and Biology
 - W-course: Maths, Economics, Business and Sociology

Course description may vary depending on if you apply to a university or university of applied science



INNOVISION CONCEPTS

Best Education & Career



Entry Requirements to Higher Education

Language requirements - English

- IELTS
- Cambridge English Certificate
- Under certain conditions, waiver possible



INNOVISION CONCEPTS

Best Education & Career



Entry Requirements to Higher Education

Language requirements - German

- DSH Test – German for university entrance – test only possible in Germany – www.dsh.de
- TestDaf – German as a foreign language – preparation and test possible, in many countries – www.testdaf.de
- Goethe Certificate C2

Both possible with Goethe Institut Egypt in Cairo



INNOVISION CONCEPTS

Best Education & Career



Entry Requirements to Higher Education

Language requirements - German

How to prepare?

- Summer programs with language schools in Berlin or Munich (age 7 to 17)
- Summer camps in boarding schools with German classes
- German courses with Goethe Institute in Cairo - Kids and Youth courses, general courses and prep courses
- Language and prep courses in Germany with language schools and at universities



INNOVISION CONCEPTS

Best Education & Career



Costs and Possible Funding

Tuition fees

- Public universities and universities of applied science charge no tuition fees
- Exception
 - Universities in Baden-Württemberg – 1500 Euro/ semester for Non-EU-students
 - Private universities – approx. between 5000 Euros and 10 000 Euros/ semester
- Semesterbeitrag – Semester Contribution



INNOVISION CONCEPTS

Best Education & Career

NEWTON
Education Services

Costs and Possible Funding

Living expenses

- Average cost of living for students in Germany is set at 853 Euros/ month
- Rent
- Health insurance – approx. 120 Euros/ month
- Food, clothing and activities etc.



INNOVISION CONCEPTS

Best Education & Career

NEWTON
Education Services

Costs and Possible Funding

Living expenses

▪ Blocked Account

- Proof of financial stability when applying for visa with **10 236 Euros**
- The German embassies **may accept other proof of financial support**
- **Monthly withdrawal is possible** and is limited to **853 Euros**, extension is possible under certain circumstances
- **Proof of funds** with every visa extension in Germany through the Immigration Office **possible**



INNOVISION CONCEPTS

Best Education & Career

NEWTON
Education Services

Costs and Possible Funding

Work permit

- During studies
 - 120 full-time days a year (40 hours a week)
 - 240 part-time days a year (20 hours a week)
 - over 450 Euros/month you will be required to pay taxes
- After studies
 - 18-month Job-Seeking Visa



INNOVISION CONCEPTS

Best Education & Career



Costs and Possible Funding

Scholarships and student loans

Scholarships:

- Deutschlandstipendium
- DAAD Scholarships and the DAAD database for scholarships – www.daad.de
- Privately-funded scholarships
- Scholarships from your university



INNOVISION CONCEPTS

Best Education & Career

NEWTON
Education Services

Costs and Possible Funding

Scholarships and student loans

Student loans, mostly at the end of your study program

- Loans from your university
- Bildungskredit – loan for education



INNOVISION CONCEPTS

Best Education & Career

NEWTON
Education Services

Application Process in General

Academic year and intakes

- Academic year consists of two semesters, mostly 30 credit points each
- Intake for winter semester (September/ October)
 - Application deadline: 15 July
- Intake for summer semester (March/ April)
 - Application deadline: 15 January
- Private universities have other deadlines or rolling admission



INNOVISION CONCEPTS

Best Education & Career

NEWTON
Education Services

Application Process in General

TestAS – Test for foreign students

- Not mandatory, but good results can improve the chances of being admitted
- Standardized aptitude test in German or English
- Information about the individual ranking compared to other applicants
- www.testas.de
- Test centres in Egypt: Goethe Institute or DAAD Egypt



Test für Ausländische Studierende
Test for Academic Studies



INNOVISION CONCEPTS



Best Education & Career

Application Process in General

Application at a university or university of applied science

- Not standardized and dependent on the state, university and study program
- Check general entry requirements concerning your school - leaving certificate with databases of DAAD and Anabin
- Check entry requirements with the university and study program of your choice



INNOVISION CONCEPTS

NEWTON
Education Services

Best Education & Career

Application Process in General

Application at a university or university of applied science

- You usually deal with three institutions

- **University**

Study program, application platform, International Office

- **Uni-assist** – www.uni-assist.de

University application service for international students

- **Hochschulstart** – **Foundation of University Admission**

Application platform for admission-restricted programs and a few non-restrictive programs



INNOVISION CONCEPTS

Best Education & Career



Introducing Two Examples

- **Technical University of Munich**

Bachelor of Science Management & Technology

University of Magdeburg

Technical
University
of Munich



INNOVISION CONCEPTS



Best Education & Career

Introducing Two Examples



- **Technical University of Munich**

Bachelor of Science in Management & Technology

- combines management courses with a specialization in technology
- Language of instruction German or English
- Application through university application platform and uni-assist
- If entrance qualification is not recognized, placement at the public Studienkolleg/
Foundation program in Munich
- Studienkolleg tuition fee: only Semesterbeitrag



INNOVISION CONCEPTS



Best Education & Career

Introducing Two Examples

- **University of Magdeburg**

Bachelor programs in English or German

High School certificate is not recognized: Studienkolleg

Application through the private Studienkolleg Germany

Submit documents to university, receive acceptance letter

Successful entrance assessment after one year:

Pre-conditional offer to University of Magdeburg or application to other universities in Germany

Studienkolleg Germany: 5800 to 7900 Euros with extra service



INNOVISION CONCEPTS



Best Education & Career



INNOVISION CONCEPTS

Best Education & Career

NEWTON
Education Services

attention!

Time for questions!
Please send your
question to
0106 145 5551
what'sapp